

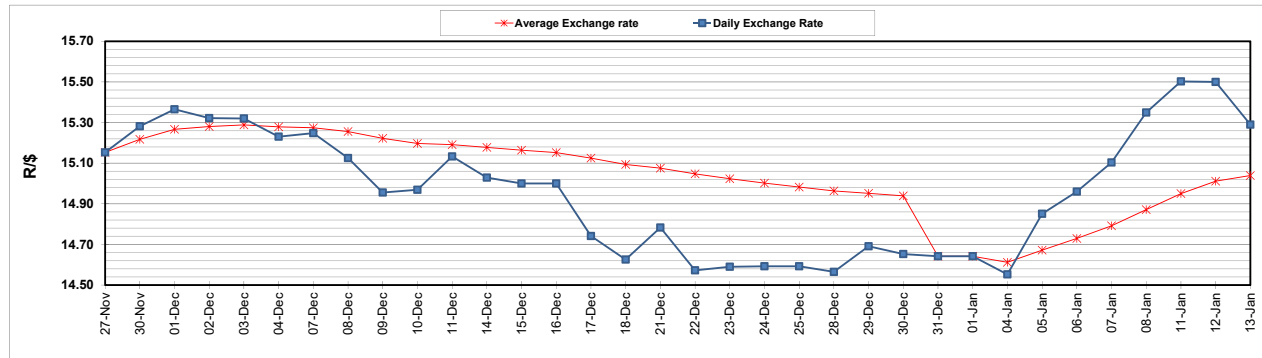
	PETROL 95 ULP	PETROL 93 ULP & LRP	DIESEL 0.05%	DIESEL 0.005%	ILL. PAR.
GAUTENG PUMP PRICE (SA c/l) AS FROM 06/01/2021	1,486.000	1,469.000	-	-	-
WHOLESALE PRICE (SA c/l) AS FROM 06/01/2021	-	-	1,300.420	1,301.820	739.688
SINGLE NATIONAL MAXIMUM RETAIL PRICE	-	-	-	-	930.000
BASIC FUEL PRICE - 13/01/2021 (SA c/l)	620.074	612.815	616.211	617.859	603.149
PRESS RELEASE CONTRIBUTION TO BFP 06/01/2021 - 13/01/2021 (SA c/l)	519.170	512.170	541.630	543.030	527.128
UNIT OVER/(UNDER) RECOVERY - 13/01/2021 (SA c/l)	(100.904)	(100.645)	(74.581)	(74.829)	(76.021)
AVERAGE BASIC FUEL PRICE 31/12/2020 - 13/01/2021	580.147	573.349	578.904	580.992	567.003
AVERAGE UNIT OVER/(UNDER) RECOVERY 31/12/2020 - 13/01/2021	(76.977)	(78.379)	(59.274)	(59.562)	(61.875)

### ANALYSIS MOVEMENT OF AVERAGE OVER/(UNDER) RECOVERY

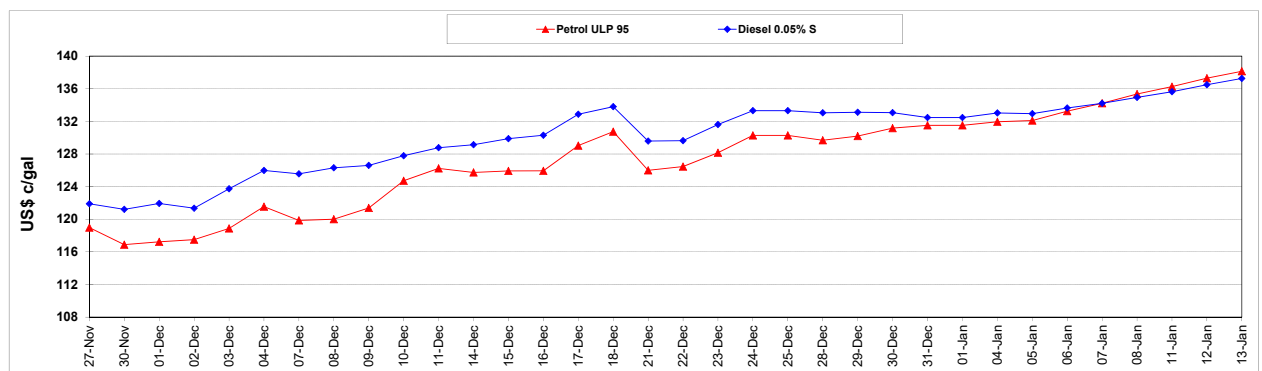
	PETROL 95	PETROL 93	DIESEL 0.05%	DIESEL 0.005%	ILL. PAR.
- MOVEMENT IN INTERNATIONAL PRODUCT PRICES	(73.116)	(74.563)	(55.421)	(55.695)	(58.101)
- MOVEMENT IN EXCHANGE RATE	(3.861)	(3.816)	(3.853)	(3.867)	(3.774)
AVERAGE UNIT OVER/(UNDER) RECOVERY 31/12/2020 - 13/01/2021	(76.977)	(78.379)	(59.274)	(59.562)	(61.875)

**R/\$ EXCHANGE RATE - (R/\$15.2900 - 13/01/2021)**

### EXCHANGE RATE USED IN BASIC FUEL PRICE



### INTERNATIONAL PRODUCT PRICES OF BASKET USED IN BASIC FUEL PRICE



### BASIC FUEL PRICE IN SA CENTS PER LITRE

